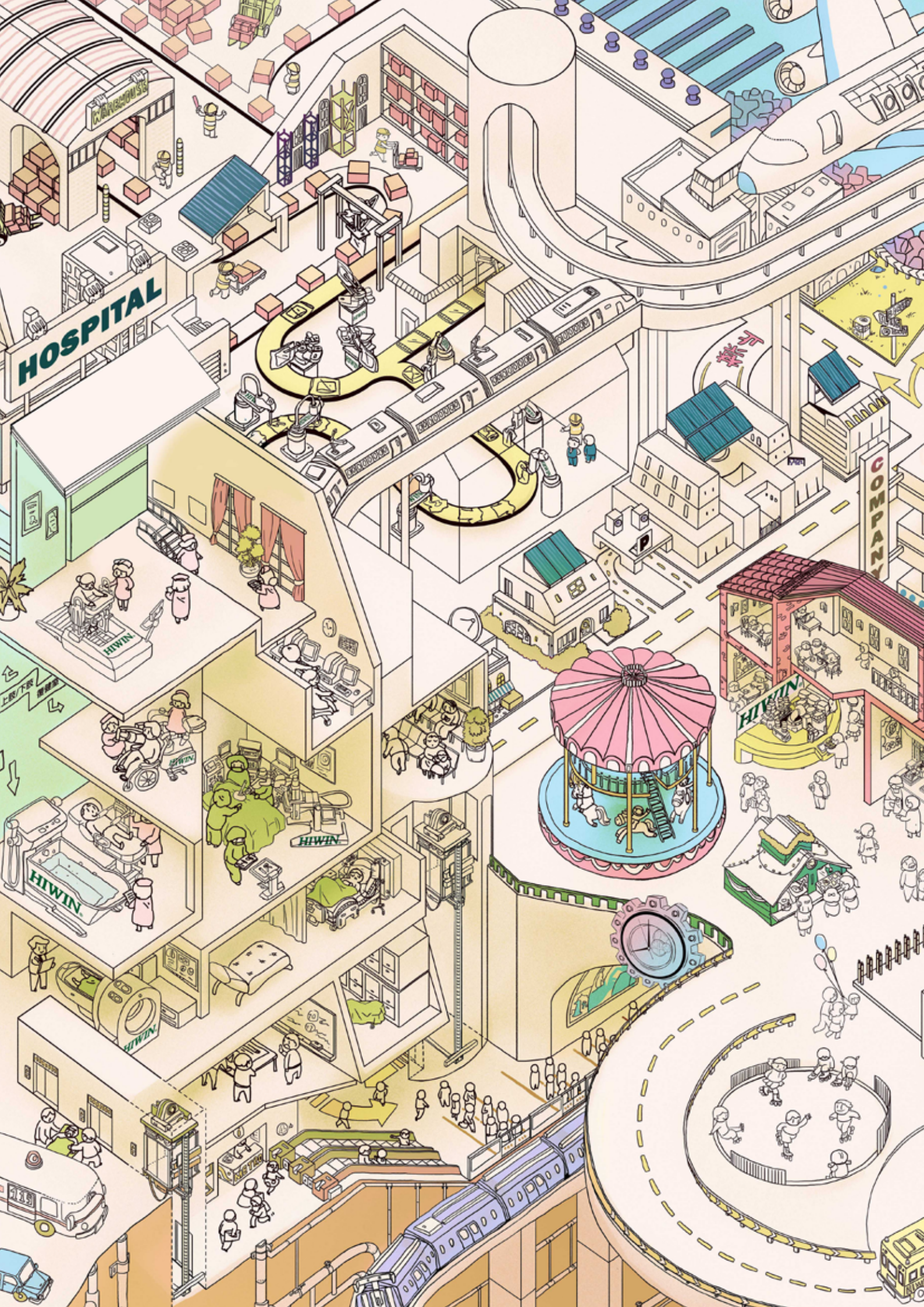


HIWIN®

Glorious 35⁺







Let's find HIWIN products hidden in
HIWIN CITY.



Founder &
Global Chairman
Eric Y. T. Chuo

Chairman & CEO
Eddie W.H. Chuo

Manufacturing is not a goal,
but a means to satisfy human needs.
Manufacturing is a service,
which is the source of innovation.

HIWIN founder
Dr. Eric Y. T. Chuo

Photo Source: Business Today

HIWIN TECHNOLOGIES CORP.

- ◆ Established: October 1989
- ◆ Founder: Eric Y. T. Chuo
- ◆ Chairman & CEO: Eddie Chuo
- ◆ General Manager: Enid H. C. Tsai
- ◆ Employees: 4,600 (June 2023)
- ◆ Capital: NT\$ 3.5 billion
- ◆ Global Headquarters: Taichung, Taiwan
- ◆ Own brand: HIWIN
- ◆ Stock code: 2049



The Company Name in Chinese Derives from the Principle “Performing Well for a Brighter Future.”

It comes from Chapter 8 of Laozi’s Dao De Jing: “The greatest kindness is like pure water.”

“The greatest kindness is like pure water.” Water benefits all things but does not compete. Not only are corporate leaders responsible for taking care of their employees and family, they must also promote the development of the industry and contribute to the local community and the country. At HIWIN, our business philosophy centers on 4 pillars: employees, shareholders, long-term development, and CSR.

Sustainable Business

For a general company, global deployment, cultivating a brand, and R&D innovation is akin to mission impossible! Not to mention that the technology applied in the precision critical component sector is the core competency itself. Companies without autonomous technology will simply be unable to compete internationally. Prior to incorporating the Company, HIWIN was determined to build a unique business - using “innovation” and “branding” as the main foundation for sustainable business operations.

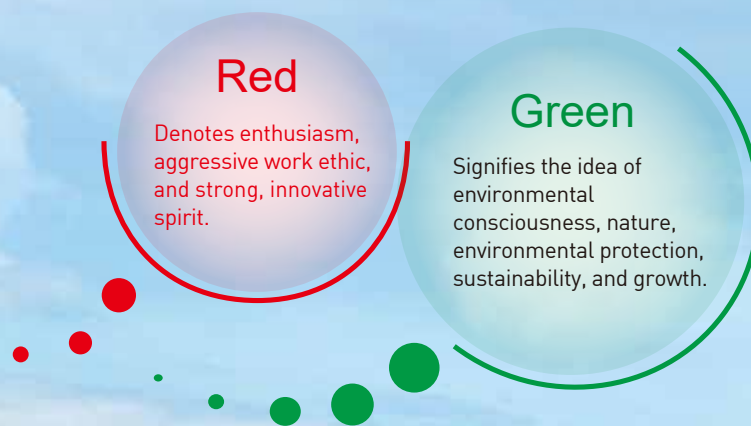


The Meaning of HIWIN

HIWIN is the combination of "HI-TECH WINNER" and means, "With us, you are a hi-tech winner." We hope that as you incorporate our linear transmission components in your applications, the quality, performance, and added value of your products will improve dramatically, making you a winner in the industry. At the same time, we strive to become a hi-tech winner that drives industrial upgrades and enhances the international competitiveness of the industry.

HIWIN Development & Management

The trademark of HIWIN has been registered in over 80 industrially advanced countries covering the USA, Japan, and many European nations; another 8 applications are currently pending registration. The Company's products include ballscrews, linear guideways, special bearings, DATORKER® strain wave gear, torque motor rotary tables, and industrial and medical robots. The Company's penetration rate is 100%.



Management Philosophy

By integrating global resources for continuous innovation and providing a better way of life and a better working environment for mankind, we can achieve the goal of continuous operations through practices of “professional excellence, working enthusiasm, and enterprise responsibility.”

Mission Statement

To provide a better way of life and a better working environment for mankind:

1. For Taiwan: Develop high precision, high-tech, high value-added industrial products.
2. For the world: Replace hydraulic components to reduce pollution and noise, and conserve energy, providing a more comfortable workplace, enabling people to live longer.
3. For employees: Provide a safe, clean, and comfortable environment for employees.
4. For shareholders: Maximize long term return on investment.



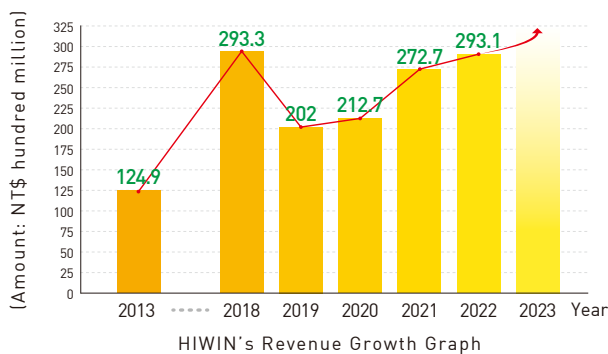


Since incorporation, HIWIN has focused on profitable growth to give back to our shareholders. We also aim to create higher added value for customers and make sure that employees receive stable wages and have a workplace where they can learn and grow.

CORPORATE GOVERNANCE

Commitment to Shareholders

Publically traded businesses should focus on making a profit and be responsible for their long-term shareholders. At HIWIN, we abide by the business philosophy of “professional excellence, working enthusiasm, and enterprise responsibility” as we endeavor to provide our loyal shareholders with ample dividends and rewards. Our contribution to society is also our shareholders’ indirect contribution to society and the country.



The Rationale Behind Looking After Employees

In the matter of looking after our employees, we do not just consider our internal employees. We also think about our upstream and downstream suppliers and customers, as the outcome of our hard work directly affects our upstream and downstream partners. For example, if we provide high-quality critical components at competitive prices, the competitiveness of our customers’ global products will increase, enabling the thriving of companies thus creating more job opportunities for upstream and downstream employees.

Learning Organizational Culture

Outstanding human resources are the foundation of a company’s sustainable business. In an effort to enhance the capability and quality of our employees, so that long-term competitive advantages are maintained, we continue to plan professional training for our employees, enabling them to stay on top of their game and apply their knowledge to their daily work. Furthermore, employees continue to learn and grow via the Company’s monthly “Knowledge Development Day” and various professional and general education courses. In doing so, HIWIN can grow steadily.

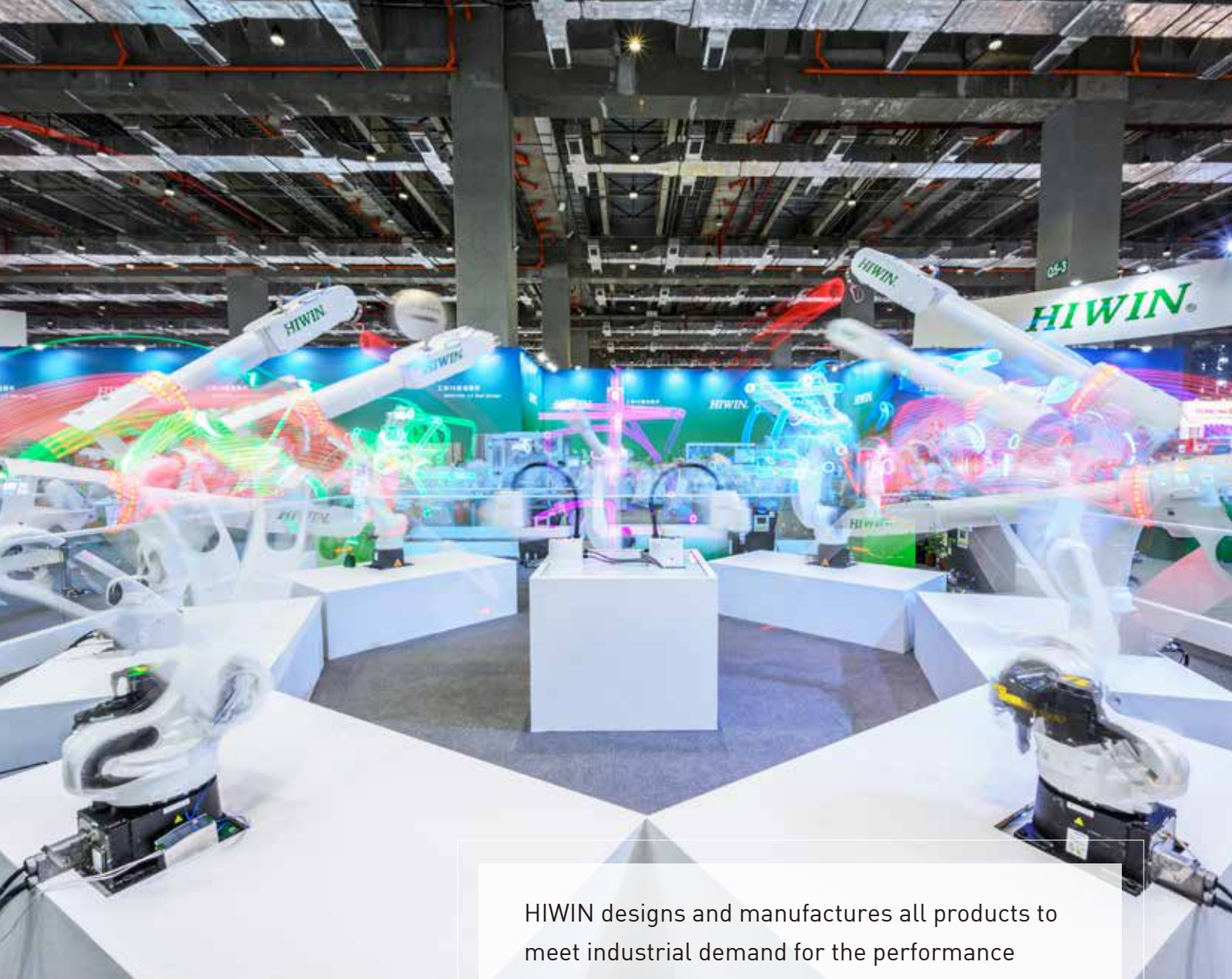
Governance Performance

HIWIN maintains a healthy brand image and sound operating performance. The management team is dedicated to protecting the rights of shareholders by strengthening the activities of the board of directors. For 3 consecutive years from 2015, the Company was ranked among the top 5% for governance review for listed companies; and among the top 6%-20% in 2023.

Thanks to positive results in information transparency, enforcement of corporate social responsibility, and a vigorous management system, HIWIN has proven time and time again that it is a company shareholders can trust.

The steady growth of HIWIN’s revenue and profitability is in no small part thanks to the robust operation of the board. Functions of the board are implemented, and development strategies and business objectives are formulated through rigorous efforts.





HIWIN designs and manufactures all products to meet industrial demand for the performance characteristics of high speed, high accuracy, multiple combined functions, green technology and user friendly. Product development strategy evolves from "key component" ➔ "sub-system module" ➔ "system module" ➔ "integrated total solution"

POWER OF PRODUCT

Components



Precision Ground Ballscrew



Rolled Ballscrew



Heavy Load Ballscrew



Ball Spline



Precision Bearing



Silent Linear Guideway



Linear Guideway AG Series



Dust-proof Cover Linear Guideway



DATORKER® Strain Wave Gear

Subsystems



KK Series



KA Series



KU Series



KE Series



KS Series



KC Series



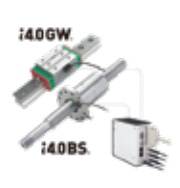
HM Series



Electric Gripper



DATORKER® Strain Wave Gear System



Intelligent 4.0 Ballscrew Intelligent 4.0 Guideway

System Component



Wafer Robot



Torque Motor Rotary Table



Equipment Front End Module



Gantry Structure



Articulated Robot



Scara Robot

Complete Machines



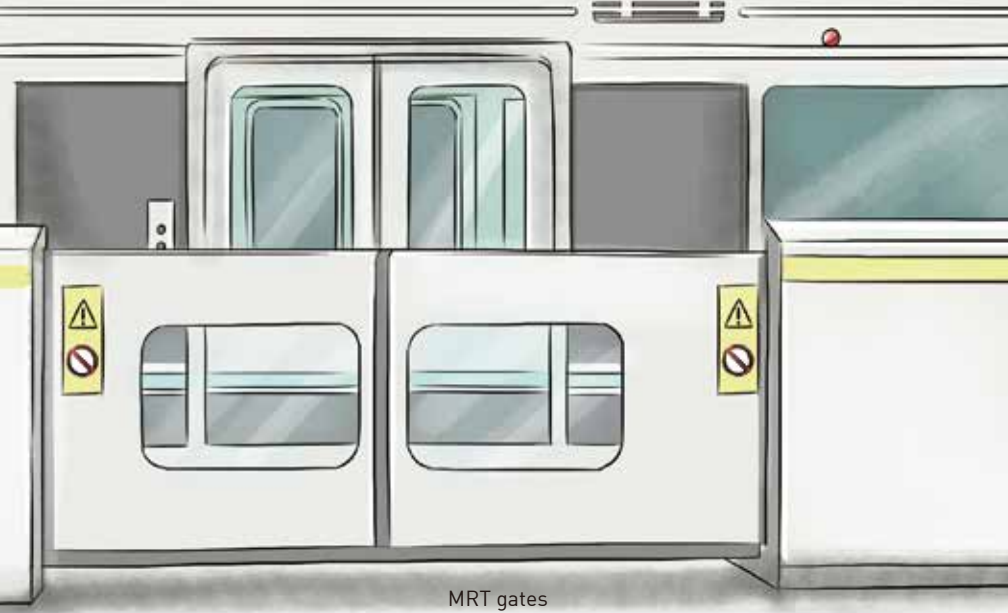
Robotic Gait Training System (MRG-P100)



Robotic Gait Training System (MRG-P110)



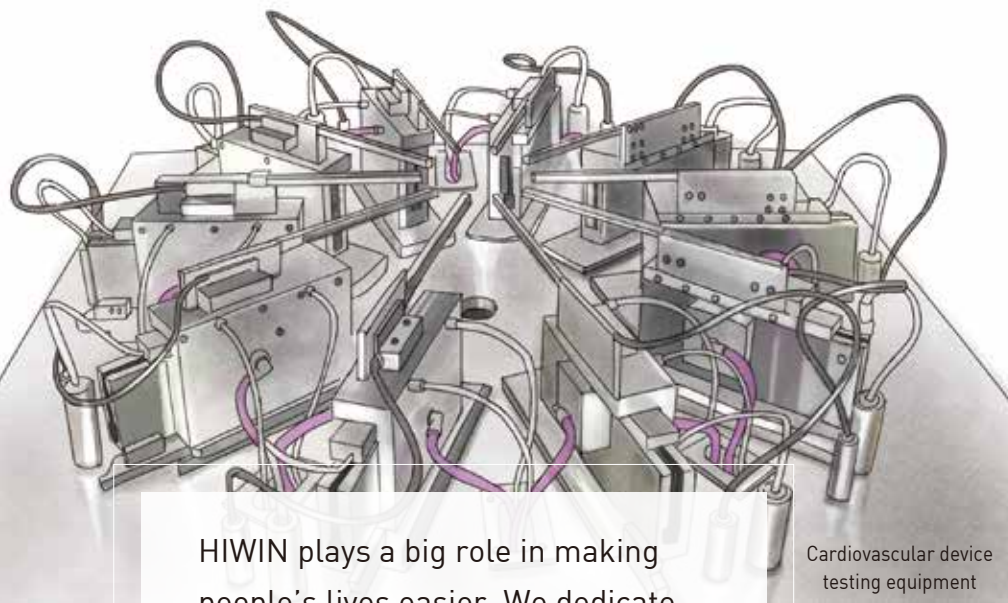
Robotic Endoscope Holder



MRT gates



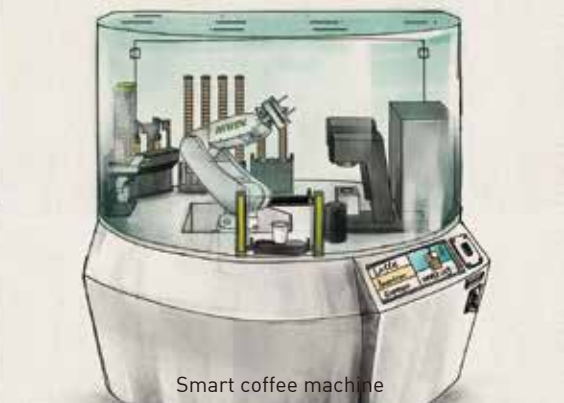
Smart clothing factory production line



Cardiovascular device testing equipment



Hematology analyzer



Smart coffee machine

HIWIN plays a big role in making people's lives easier. We dedicate ourselves to improving people's lives, from life, old age, illness, death, to food, clothing, housing, transportation, education, and entertainment.

PRODUCT APPLICATIONS

Applications

Precision machine tools, industrial machinery, intelligent automation, biotechnology, semiconductor industry, 3C industry, medical equipment, optoelectronic industry, transportation, and environmental protection and energy-saving industries.

Food

Smart Coffee Shop
Various types of robotic arms,
electric grippers, linear guideways

**Food packaging
automation production line**
Delta, SCARA, single-axis robots

Clothing

Smart clothing factory production line
Linear guideways, linear motors, single-axis robots

**Weaving machines, sock knitting machines,
hat knitting machines**
Ball splines, linear guideways, servo motors, drivers

Living

Vibration control system
Linear guideways, linear motors

Green energy - solar power
Renewable energy converters

Green energy - wind power
Precision Bearing

Transportation

MRT gates
Linear guideways

Electric vehicles
Electric power steering system (EPS)

**Bicycle pedal automation
assembly production line**
SCARA, Multi-axis robots,
electric grippers, rotary joints

**Electric vehicle
batteries**
Ball screws, linear
guideways

Education and Entertainment

Diamond cutter
Ball screws

Spotlights
Linear guideways

Gaming keyboards
Torque motor rotary tables, ball screws, linear guideways

RV Campervans
Ball screws, linear guideways, actuators

Life

Artificial insemination equipment
Ball screws, linear guideways

3D bioprinters
Linear guideways

Old Age

**Hematology analyzer,
robotic gait training system**
Linear guideways, Ball splines

**Dental die cutting machine
(dental machine)**
Ball screws, linear guideways

Illness

Robotic endoscope holder
Computed tomography,
Nuclear magnetic resonance
Linear guideways, linear motors (HIWIN)

X-Ray Detection
Ball screws, linear guideways, single-axis robots

Death

Coffin carriers
Actuator

Coffin engraving machine
Linear guideways

Headstone engraving machine
Linear guideways, linear motors

Special Applications

The Company's transmission components are used in epidemic prevention equipment:
Respirators, temperature measuring instruments, 3D face shields,
medical gloves, mask machines, blood testing machines, etc.



Innovation plays the most important role in the Company. Aside from independent R&D, we also carry out R&D with our customers and suppliers as well as cooperating with universities all over the world and establishing R&D centers.

Our R&D

Each year, HIWIN invests 3-7% of its annual turnover in R&D, focusing on reflow technology and precision processes. So far, a complete linear transmission product line has been constructed starting with component technology, to sub-system components, to system components then complete machine technology.

Constant Innovation

In the process of developing new products, we engage in a long-term collaboration with major international companies in terms of design and development, as well as information exchange. Design collaboration, in particular, requires R&D personnel to design and develop through design in and ESI (Early Stage Involvement) to increase customers time-to-market speed. The Company has transformed its passive after-sales service to open and interactive pre-sales services. We apply extensive engineering experience in analysis and testing, process technology, dynamic simulation, and mechatronic integration through collaborative design. We possess the capability of technological autonomy and technological leadership in the linear motion sector.

Joint R&D

"HIWIN - National Tsing Hua University Joint R&D Center" is HIWIN's first large-scale joint R&D center in Taiwan. The Center was established in 2014 in the hope of setting a new example for university-industry cooperation. The Company invests NT\$20 million per year in R&D to conduct medium and long-term forward-thinking technology research and development. In a bid to develop medical robots, HIWIN established the "HIWIN - CMU Joint R&D Center" with China Medical University in 2015, aiming to develop forward-thinking medical and health-care-related technologies, identify cross-domain application research opportunities and foster high-level R&D talent in medical engineering and rehabilitation technology.



Industry-Academia Cooperation

At HIWIN, not only do we foster excellent mechanical engineering talent through close industry-academia cooperation, we also carry out industry-academia cooperation programs, industry-academia programs, industrial technician training, and off-campus internship for technical college students, keeping ourselves in line with new technologies and the promotion of innovative ideas.

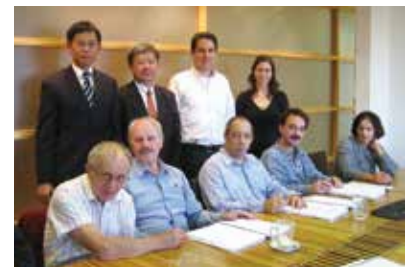


Mergers and Acquisitions

HIWIN attains key technologies through M&A with the aim to speed up competitiveness.

In 1993, the Company attained key technology of ball screws by acquiring Holzer.

In 2009, the Company invested in a leading Israeli controller manufacturer, Mega-Fabs, and attained key technology in high-end controllers.



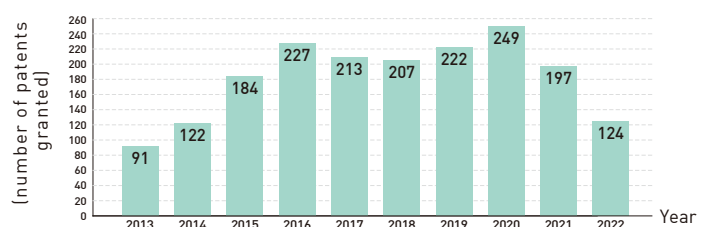
In 2010, the Company acquired MATRIX, a British firm, and attained its key technology in making thread grinding machines.

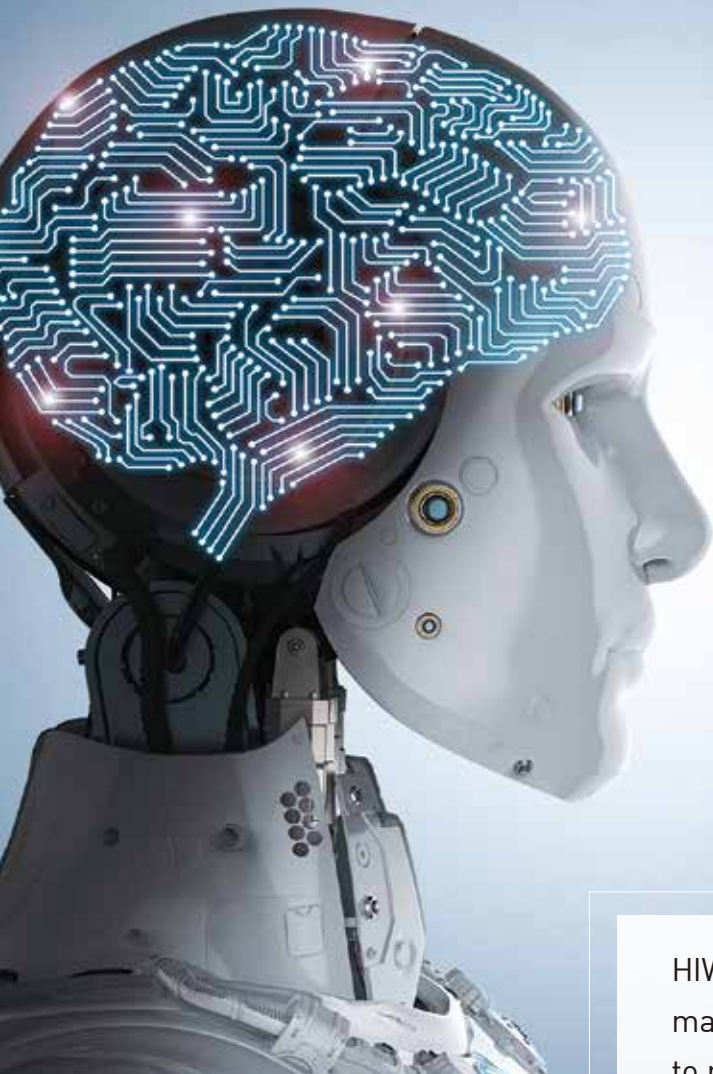
In 2015, the Company acquired Luren Precision (now Matrix Precision) and attained its core technology in the gear reducer making process for robot joint.

Patent Portfolio Planning

Not only do R&D personnel produce new patents, but they also analyze existing patents. As of the end of June 2019, we have accumulated a total of 3,056 patent applications, among which over 1,983 are still valid.

HIWIN has a comprehensive and innovative patent proposal and review system, to ensure that applications are handled properly and avoiding the loss of patentability. We also have an extensive trade secret system to protect our technologies.





INDUSTRIE 4.0 Best Partner

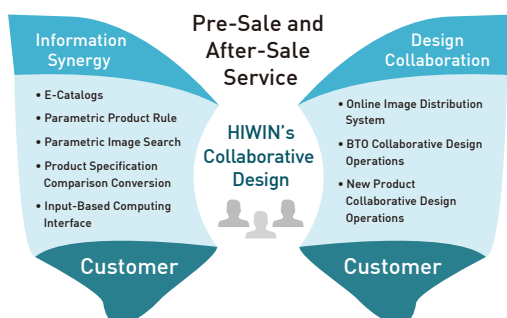
HIWIN breaks away from the traditional mechanical machinery mindset because it does not limit itself to manufacturing.

HIWIN has evolved from intelligent automation to intelligent manufacturing, and finally to intelligent services with the aim of understanding customers as well as customers' customers, creating added-value to our customers.

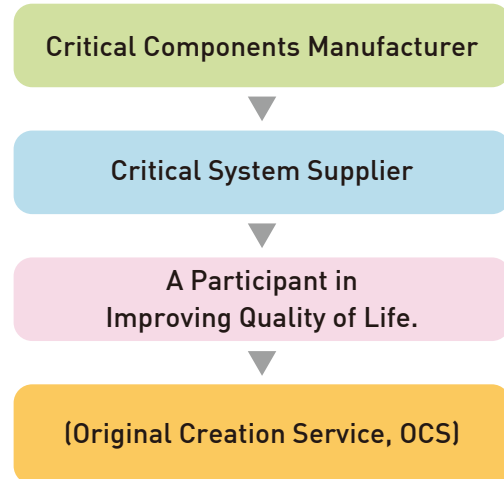
SERVICE INNOVATION

HIWIN has a Mindset for Differentiation and Provides Comprehensive Total Solution Services.

1. Top-down integration to promote synergy management
 - ◆ Through collaborative production planning with up-stream and downstream customers, the Company has transformed its passive after-sales service to open and interactive pre-sales services.
 - ◆ With the collaborative development of designers and researchers, customers can instantly enter the market.
2. Manufacturing Service Innovation
 - ◆ By improving our manufacturing technology and constantly expanding our product lines, our customers are provided with comprehensive linear transmission products and intelligent automation services through independent R&D, industry-academia cooperation, and M&A in key technologies.
 - ◆ As we reach the intelligent automation era, the Company has launched comprehensive robotic and medical product lines, providing a better working environment for those in the manufacturing and medical sectors.
3. Helping customers practice intelligent manufacturing
 - ◆ HIWIN has been working tirelessly with various sectors to promote intelligent manufacturing, creating a new channel for the Taiwanese industry, and strengthening international competitiveness.
 - ◆ Completed in 2019, our intelligent production line for plumbing products and hand tools is a leading example for all of Taiwan's small and medium-size businesses to reach their "intelligent" dreams.
4. Maintain customer-oriented relationships
 - ◆ Continue to satisfy customers' high-quality product demand through process improvement.
 - ◆ Subsidiaries are established in Taiwan and overseas to provide close customer service. In 2019, there were a total of 14 subsidiaries and R&D centers set up worldwide with over 100 global distribution networks, providing fast and real-time localized services.



Construct Broader and Deeper Service Areas



Medical Service Innovation

There were 3 main driving factors for HIWIN to enter the medical field - First, new products developed by HIWIN are always based on one basic belief: to extend existing core technology. Only by grasping key technologies and critical components, can the Company maintain its long-term competitiveness.

Second: the kind heart of the founder and Global Chairman of HIWIN, Eric Y.T. Chuo. The Global Chairman's mother passed away when she was in her 60's; although she was initially diagnosed with a minor illness, the lack of adequate medical resources and the poverty that existed in Taiwan at the time hastened her untimely death. From that point, Global Chairman Chuo vowed that he would do anything in his power to help those in need of medical treatment. However, when he discovered the high cost of medical equipment made overseas, he had the idea to develop medical equipment at affordable prices that could help those in need.

Third: HIWIN's management philosophy and mission statement: "To provide a better way of life and a better working environment for mankind."





HIWIN upholds “pursuing excellence” as its highest guiding principle, and does not compromise concerning quality in manufacturing, including talent, machinery, materials, methods, and processes. Only by pursuing excellence, can the Company reach zero failure and achieve the spirit of craftsmanship.

INTELLIGENT MANUFACTURING

Pursue “The Spirit of Craftsmanship”

We are constantly pursuing innovation in product development and outstanding craftsmanship. Our brand HIWIN is sold across the world. HIWIN's intelligent manufacturing systems integrate robots, IoT, and big data to achieve automated dispatching and production load management. We continue to improve ourselves and keep up with rapid customization, small quantity manufacturing, and the diversity of market trends.

Your Best Partner in the Industrie 4.0 Era

The 2 major components constituting Industrie 4.0 are intelligent factories and intelligent manufacturing, where robots play a crucial role. HIWIN has developed the most complete range of industrial robots in the world: including wafer robots, articulated robots, delta robots, and Scara robots. HIWIN is committed to the development of this industry, extending Industrie 4.0 technologies, and listening to the feedback of customers to understand the hidden needs of the industry. We have invested in i4.0 BS Intelligent Ballscrew technology to help machine operators and managers monitor the condition of the ballscrews in real-time. We also prepare complete plans for machine maintenance to further reduce losses caused by machinery downtime, providing customers with innovative services and added value.

In 2018, HIWIN successfully developed the core component for our robots - the DATORKER® Robot Reducer. This has now been mass-produced, meaning that HIWIN has mastered 3 major core technologies in robotics: reducer, motor, and controller which are all being produced by the Company, achieving 100% self-manufacturing. While the Company is turning a historic new page for MIT robots, it is also your best choice for moving toward Industrie 4.0.



HIWIN encourages innovation in the plumbing industry with a donation of robots.



As new talent is the very foundation of industrial development, we are committed to fostering quality engineers in mechanical, electrical and computer fields. We enhance the quality of human resources and develop international talent through extensive innovative programs, education, and training courses as well as industry-academia cooperation.

Industry-Academia Cooperation

In an effort to help students in mechanical engineering learn and experience the precision machinery industry and to provide assistance so they can make an informed decision about their future career direction, we actively take part in diverse industry-university cooperation programs promoted by the government. We also foster students with theoretical foundations and practical skills through long-term corporate internships.

Industry-Academia Cooperation Programs

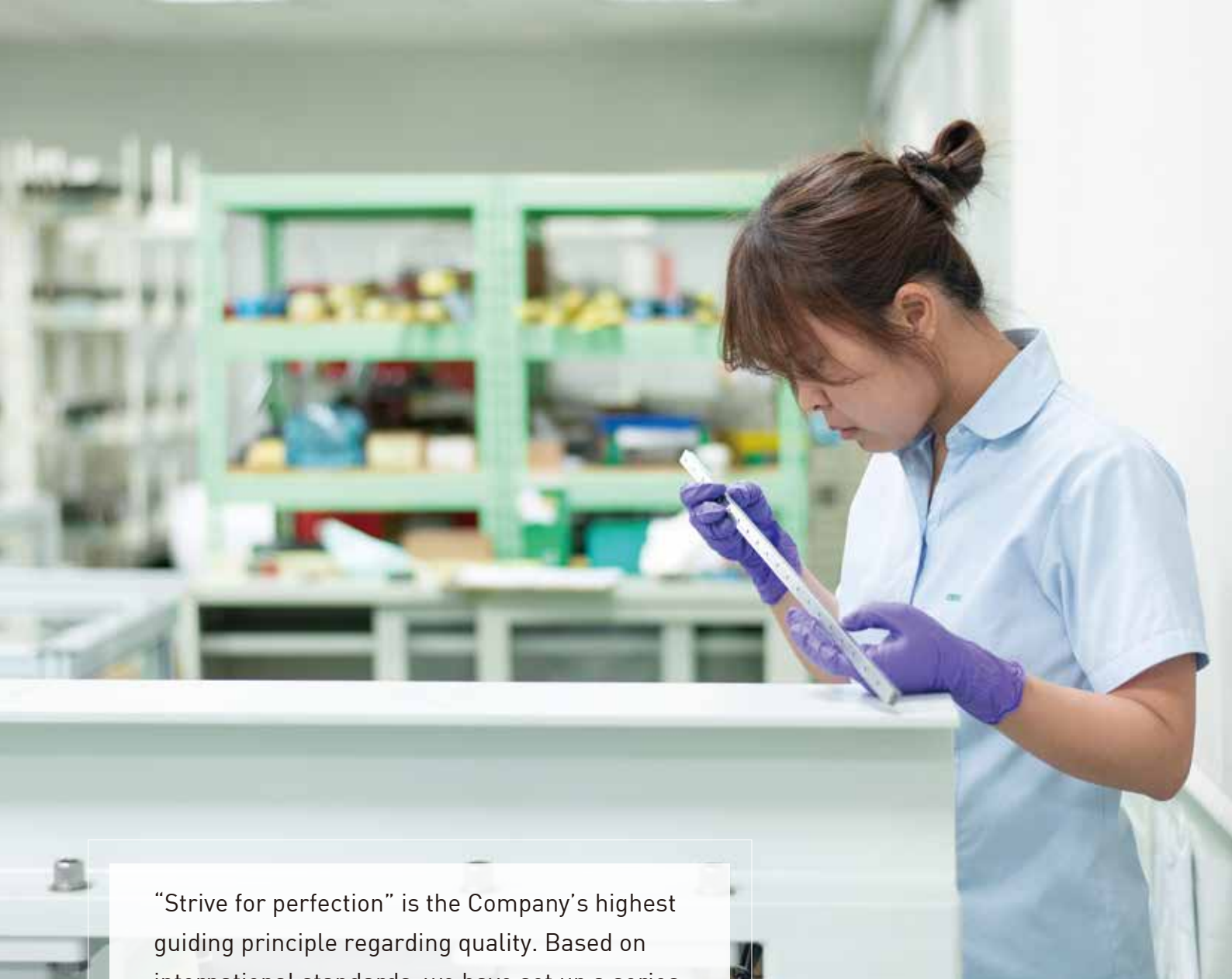


Since 2012, HIWIN has been involved in 37 industry-academia cooperation programs, enabling students to have an early career experience. Each year, the Company organizes company visits and lectures, allowing students to better understand the precision engineering industry. Besides helping students to develop professional skills, they also establish soft skills and enhance their competitive advantages.

Diverse Education and Training

As a means to improve the capabilities and quality of employees and to maintain the Company's long-term competitive advantage, we have established a complete education and training system while also creating a suitable environment to facilitate learning. The Company's training programs include: newcomer training, core functional training, professional functional training, management functional training, and external training. Employees receive appropriate training via the classroom, digital training, on-the-job training, external training, study club, oratory training, exhibition visits, degree programs, job rotation, and project assignments. The training content and methods are diverse and extensive.





“Strive for perfection” is the Company’s highest guiding principle regarding quality. Based on international standards, we have set up a series of management systems and standardized processes. The “PDCA” management method has also been adopted to aid the Company in pursuit of excellence while improving technology and product quality.

QUALITY MANAGEMENT

Standards and Certifications



1992-2004	2005-2015	2016-2023
<ul style="list-style-type: none"> ◆ Attained SGS ISO 9001 [(QMS),UK] ◆ Attained TÜV ISO 14001 [(Environmental Management System], Germany) ◆ Attained TÜV OHSAS 18001 [(Occupational Safety and Health Management System], Germany) 	<ul style="list-style-type: none"> ◆ Attained TÜV TOSHMS [(Taiwan Occupational Safety and Health Management System], Germany) ◆ Attained BSI ISO14064-1 [(GHG Inventory], UK) ◆ Attained BSI PAS2050 [(Carbon Footprint Inventory for Ball Screw Products], UK) ◆ Attained SGS ISO 13485 [(Medical Device QMS], UK) ◆ Attained [TIPS] (Taiwan Intellectual Property Management System) ◆ Attained TÜV ISO 50001 [(Energy Management System], Germany) ◆ The Company's CSR report passed the BSI [AA1000 Standards] 	<ul style="list-style-type: none"> ◆ Attained TÜV ISO 45001 [(Occupational Safety and Health Management System], Germany) ◆ Vehicle Ballscrew obtained IATF 16949 quality management system certification ◆ Passed ISO 14046 Water Footprint Assessment ◆ Attained BSI ISO14067 product carbon footprint ◆ Attained the World's First ISO 46001 Water Efficiency management System Certificate from TÜV Rheinland, Germany

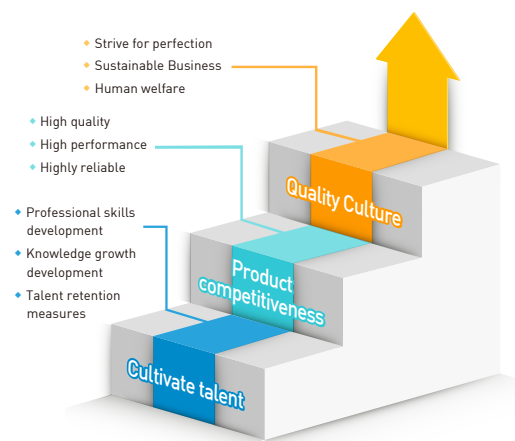
Enhance Quality in Upstream and Downstream Supply Chains

- ◆ Supplier evaluation: Not only do we demand quality, price, and the timely delivery of our suppliers' products, we also attach great importance to our suppliers' long-term supply capabilities and the nature of their company management. The Supplier Evaluation Score is used to indicate preferred suppliers.
- ◆ Promote international standards: Promote and help suppliers enhance the quality of their products, their environmental protection efforts, and their ability to reach international standards. We hope that by working together with suppliers, we can continue to make improvements to meet all relevant requirements in order to further increase the competitiveness of both sides of the supply chain.
- ◆ Supplier environmental safety and health management: We have developed the "HIWIN Supplier Code of Conduct," which will continue to serve as the foundation for supplier actions, promoting a safe working environment, dignified labor relations, ethical operations, environmental protection measures, and ongoing risk reduction.
- ◆ Our supply chain is prohibited from using harmful substances: As HIWIN's products are sold worldwide, we demand that suppliers provide information on raw materials used in their processes to



ensure that no substances that are harmful to the environment are used in our products and that our products comply with the requirements of customers and international laws and regulations (e.g. RoHS).

- ◆ Consistent processing standards for subcontractors: We uphold professional standards on raw materials and conduct reviews on their standardization in order to establish appearance evaluation standards for all subcontractors to follow.



ISO13485 Certification Ceremony



As we are committed to facilitating health in the workplace, we help employees better understand and care for their own physical and mental health. Employees at HIWIN also learn about various health hazards in their daily lives and work to help them develop good positive lifestyles and health behaviors.

Health Awareness

◆ One-day Volunteer at China Medical University

Since 2019, the Company has been promoting the “One-day Volunteer at China Medical University” program. Paid leave, meal expenses, car parking expenses, and prior education are provided by the Company to encourage employees to take part. Employees taking part are required to provide feedback on what they have learned. As of the first quarter of 2020, a total of 145 employees have participated in the program. These employees have shown a positive attitude; therefore, the Company will continue with this meaningful program.



Health Activities

◆ Stretching Exercises / Morning Exercises

Mornings are the start of the day. Not only do we attach great importance on the regular exercise of our employees, the morning exercise at the Company is equally vital. During the 8-minute exercise, employees can stretch their legs and muscles to welcome the start of their day full of energy. We know this is not a school, but it is something we do to participate in for the good of our employees.

◆ Sporting Events

At HIWIN, we constantly organize sporting events including badminton, bowling, basketball, and softball tournaments. These fierce and intense games not only help with the employee’s enthusiasm and initiative, they also help bring them closer together.

Health Management

◆ Good Workplace Management

In an attempt to promote health in the workplace, HIWIN aims to establish a full range of health management programs. In order to do so, we have dedicated ourselves to promoting special care, healthcare, health promotion, and employee assistance. In a bid to create a friendly workplace for all employees, the Company has attained the “Badge of Accredited Healthy Workplace” issued by the “Health Promotion Administration, Ministry of Health and Welfare” as well as the “AED Certification” issued by the Ministry of Health and Welfare’s local health bureaus.

◆ Maternal Health Management

At HIWIN, we promote employee privacy and have created a female-friendly workplace. By providing a comfortable and private breastfeeding space, breastfeeding employees can continue to come to work. To make things easier for employees who are pregnant, we also provide dedicated parking spaces.





Business operations are a social responsibility. While the Company promotes its products and builds its core technologies, it also actively nurtures the “cultivation of talent” in a series of education programs dedicated to creating a flourishing society.

Photo by Feng-Ming Shen, HIWIN

1. HIWIN Thesis Award

Since 2004, HIWIN has invested millions of dollars annually in the “HIWIN Thesis Award” in the hope of combining the power of industry and academia to enhance the upgrading of R&D in order to improve the added value of products and the core competitiveness of the industry. 2023 was the 20th anniversary of the award. With a total investment of more than NT\$100 million, the program was well-received and highly praised by both the machinery industry and academia in Taiwan. The award has also been called the “Nobel Prize” of the machinery industry.



2. HIWIN Doctoral Dissertation Award

Since 2011, HIWIN has invested approximately NT\$20 million annually to entrust the China Mechanical Engineering Society (CMES) in Beijing to hold the “HIWIN Doctoral Dissertation Award.” This award aims at encouraging students from China, Taiwan, and Hong Kong to be involved in the R&D and creative branches of the mechanical engineering and automation industry, and help foster young outstanding mechanical engineering talent. By doing so, the interaction between the industry and academia is promoted, further facilitating technological advancement and innovation in the Chinese machinery industry.



3. HIWIN Intelligence Robotic Competition

Starting in 2008, the Company has allocated NT\$3 million to the “HIWIN Robot Competition” to discover outstanding individuals in relevant industries, effectively promote industry-university cooperation and jointly enhance the technology and production value of Taiwan’s robotics industry.



4. HIWIN Volunteers

In June 2012, a group of volunteers providing education and social services was set up by HIWIN Education Foundation. Through the support of HIWIN and our employees’ participation, the group aims to provide care and support services to all employees as well as taking part in education and social services in order to fulfill our corporate social responsibilities.





When it comes to new talent, we not only focus on graduates and university students, we also give back to the community and help with basic education development - evidence of the Company's long-term commitment to corporate social citizenship.

5. Caring for Children's Education

Global Chairman Chuo believes that: "Although the poor have nothing, knowledge is power." At HIWIN, we emphasize the importance of the education environment. Each year, we allocate funds to help purchase equipment for nearby school libraries, or to improve their computer software and hardware. We also donate books on an annual basis. Schools that benefitted include Hsinchu Liou-Jia Elementary School, Yunlin Cih-Tong Primary School, and Chiayi Sun-Ho Elementary School.

English is a vital tool in establishing connections with people from all over the world. The Company has, since September 2010, been sponsoring Hsinchu's Liou-Jia Elementary School with "English lessons" in order to get children into a habit of speaking English from a young age. Since 2014 the Company has also sponsored Cih-Tong Primary School's English lessons.

6. Promoting Robots Technology Education

In response to the challenges posed by an aging population and declining birth rates, the integration of Machine with Robots to support in manufacturing has become a prevailing trend. HIWIN actively encourages and promote schools to cultivate and train students with the expertise to compete and excel in the global market.

- ◆ **Taiwan Robotics Industry- Academia Alliance:** In 2020, HIWIN took the initiative and established the Taiwan Robotics Industry- Academia Alliance. By the end of 2022, HIWIN has sponsored a total of 78 robots, valued at over NTD\$ 30 million.
- ◆ **Promote the National High School Skills Competition organized by the Ministry of Education:** HIWIN supported the addition of the 29th Category – Robotic Techniques in the National High School Skill Competition and sponsored the required robots and electric grippers required in the competition.



7. Donating Equipment to Support Firefighters

HIWIN has donated disaster relief equipment to increase firefighting efficiency aiming to ensure public safety and safeguarding lives and properties.



8. Donation of N95 Masks to Support Healthcare Worker

Recognizing the heightened risk faced by healthcare workers due to their exposure to high-risk environments and close contact with the patients, HIWIN has contributed NTD\$ 1.08 million towards the procurement of N95 medical masks. This measure is crucial not only for safeguarding their health but also for ensuring the sustainability of Taiwan's medical capacity.





By working together in other fields, the Company can create a dialogue between technology, art and industry, allowing an opportunity for young people involved in the art, culture and technology sectors to grow together, while at the same time adding a new source of energy to Taiwan's soft power.

The Sound of Blooming

The largest artwork installation at 2018 the Taichung World Flora Exposition "The Sound of Blooming" was designed by a team from LuxuryLogico, and co-created by 12 local companies including HIWIN and HIWIN MIKROSYSTEM." The "Precision Drive Module" made from HIWIN MIKROSYSTEM motors and drives and the speed reducers of local Taichung manufacturers, was used as the heart of the "Flower God"; the 697 red flower movement module can be controlled in real-time and brings out the visual motion and the colorful vitality of the blooming flower with changes in day/night. Through cross-industry cooperation, Taiwan can shine in the world.



HIWIN Named as an Artistic Enterprise by Offenburg

On September 21, 2007, the Company was selected as an “Art Enterprise” by Offenburg city in Germany. HIWIN’s products, including ballscrews and linear rails, were used to make an art installation that was displayed to the public in the Offenburg Art and Culture Park. Our Company was the only foreign-owned company among the other 12 companies selected.



Left / HIWIN Global Chairman: Eric Y. T. Chu
Middle / Mayor of Offenburg: Ms. Schreiner
Right / HIWIN General Manager: Enid H. C. Tsai



Middle / Artist: Mr. Daniel Depoutot

Dialogue Between Soft and Hard Power

On August 16, 2018, Taiwan Design Expo was held in the Cultural Heritage Park in Taichung, where we saw collaboration between the World Brewers Cup Champion Chad Wang and HIWIN’s robotic arm presenting another style in coffee brewing. Simulating Chad’s technique, our robotic arm performed remarkably, showcasing the communication between software and hardware.



“Family Repertory Theater - Flowers of the Forest”

For the first time ever, HIWIN robotic arms teamed up with the Taiwan Symphony Orchestra to perform aerial stunts. Not only do robotic arms play a key role in precision manufacturing, they can also perform and dance on the stage alongside lights and music. The Family Repertory Theater play - “Flowers of the Forest” represented the perfect collaboration between art, technology, and humanity.



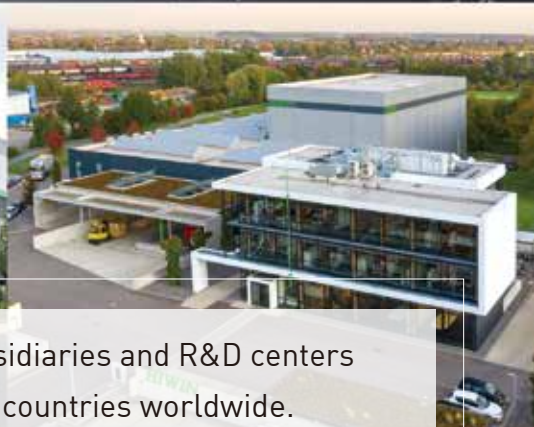
Dada’s Dream Notes

In 2018, HIWIN, the Taiwan University of Arts, and the Industrial Technology Research Institute worked together on the musicals “Dada’s Dream” and “Island Through Time.” Robotic arms used to perform these musicals provided an innovative bridge between technology and art while attempting to find the link between different professions and fields to further explore the possibilities in expression and creation. By combining art and technology, a new field was created to help reimagine the entry point for technological art, bringing more imagination and possibilities.

Dialogue Between Technology and Art

HIWIN continues to take part in creation with other sectors. For HIWIN’s 30th anniversary in 2019, the Company specially organized the “Dialogue Between Technology Art” concert. The concert saw the collaboration of HIWIN’s robot arms with the music of the Taiwan Symphony Orchestra, air dance, Taiwan Acrobatic Troupe, and stage plays performed at the National Taichung Theater. With the development of corporate culture as the main theme, coupled with music and theater, the modern music theater created from the integration of elements from the collaboration of 3 different industries provided audiences with a new and refreshing experience. It was also a big step forward in the combination of technology and art.





HIWIN has set up subsidiaries and R&D centers in many industrialized countries worldwide. We maintain a global distribution network to provide localized customer service.

GLOBAL NETWORK



HIWIN GmbH
Offenburg, Germany
www.hiwin.de
www.hiwin.eu



HIWIN Srl
Milan, Italy
www.hiwin.it



HIWIN FRANCE
Strasbourg, France
www.hiwin.fr



HIWIN CHINA
Suzhou, China
www.hiwin.cn



HIWIN JAPAN
Kobe-Tokyo-Nagoya-Nagano
Tohoku Shizuoka-Hokuriku-
Hiroshima-Fukuoka-Kumamoto
www.hiwin.co.jp



HIWIN Schweiz GmbH
Jona, Switzerland
www.hiwin.ch



HIWIN SINGAPORE
Singapore
www.hiwin.sg



**Mega-Fabs Motion
Systems, Ltd.**
Haifa, Israel
www.mega-fabs.com



HIWIN USA
Chicago, USA
www.hiwin.com




HIWIN s.r.o.
Brno, Czech Republic
www.hiwin.cz



HIWIN KOREA
Suwon•Changwon, Korea
www.hiwin.kr



HIWIN U.K.
Coventry, UK
matrix-machine.com



HIWIN focuses on business operations and strives for innovation and growth. It has a distribution network all over the world, and its trademark has been registered in over 80 industrially advanced countries. HIWIN is now a world-leading brand in the field of precision transmission control.



ISO 45001



ISO 9001



ISO 14001



ISO 50001



ISO 13485



PAS 2050-1
ISO 14064-1



Taiwan Intellectual
Property
Management
Standards
[Tips]



ISO 14046





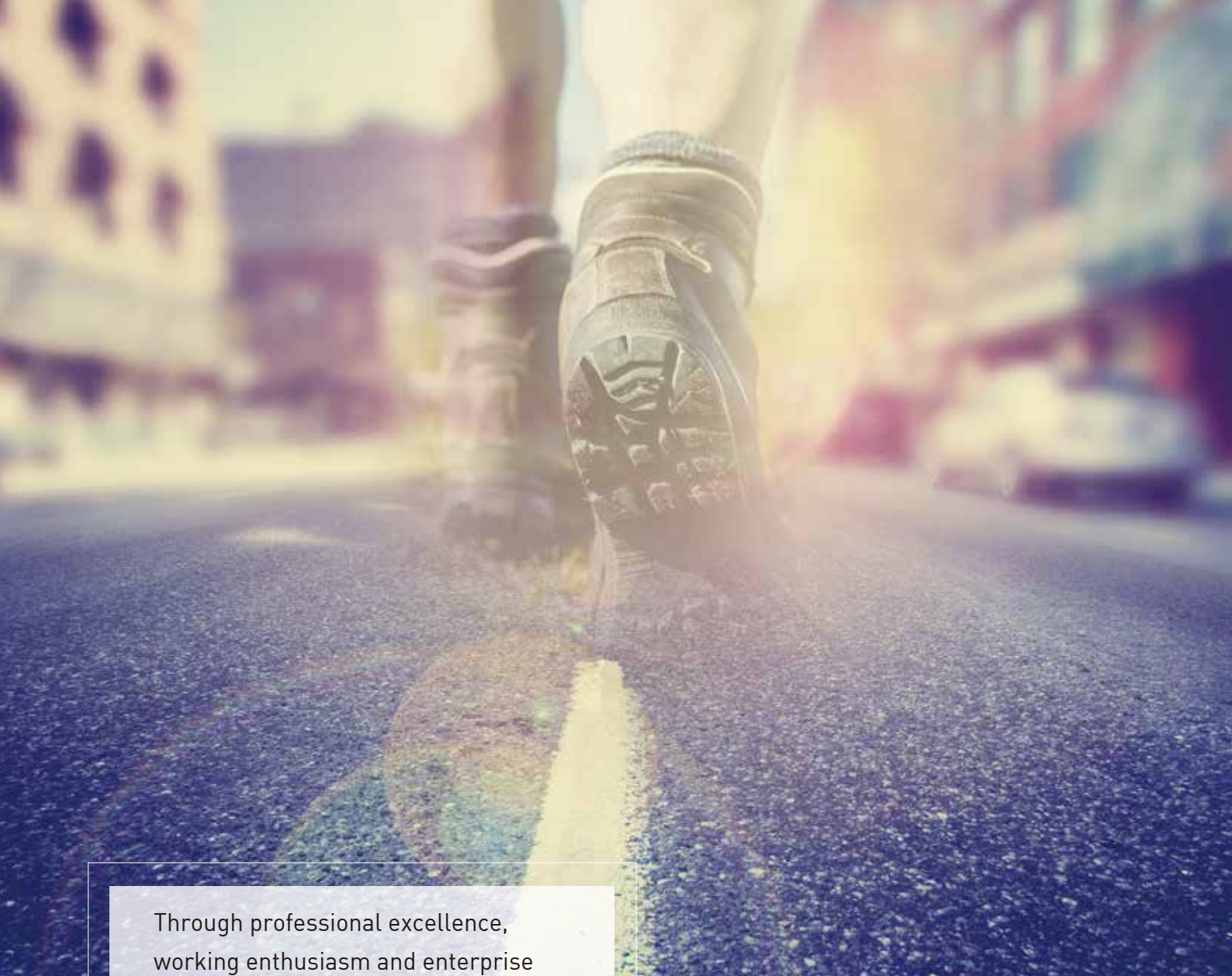
ISO 46001

HONOR



From 1993 to 2024, 38 products of HIWIN Group won the Taiwan Excellence Gold & Silver Awards.

 <p>2023 APSAA Award of Robotic System Integration (ARSII) Outstanding Award in the Innovative Application R&D Category</p>	 <p>2023 TSAA Taiwan Sustainability Action Awards Gold and bronze at the Sustainability Action Award 2021-2022 Silver at the Sustainability Action Award</p>	 <p>2023 Silver at the National Invention and Creation Awards (Crossed Roller Bearing)</p>	 <p>2020-2021, 2023 Taiwan Corporate Sustainability Report Platinum Award 2015-2019, 2022 Taiwan Corporate Sustainability Report Gold Award</p>	 <p>2020-2023 Best Taiwan Global Brands TOP25</p>	 <p>2022-2023 TCSA Taiwan Top 100 Model Enterprise Award 2020 TCSA Taiwan Top 10 Model Enterprise Award</p>	 <p>2020-2023 BSI Corporate Sustainability Resilience Excellence Award 2018-2019 BSI Corporate Sustainability Excellence Award</p>
 <p>2021-2023 Award of Robotic System Integration (ARSII) Outstanding Award in the Innovative Application R&D Category</p>	 <p>2012-2023 Common Wealth Magazine's Top 100 Sustainable Companies 2008-2011 Excellence in Corporate Social Responsibility (mid-size enterprise)</p>	 <p>2016-2018, 2021 Top 5% Among All the Listed Companies for Corporate Governance Appraisal by TWSE</p>	 <p>2019 Common Health Magazine CHR Annual Health Corporate Citizenship - Innovation Award</p>	 <p>2019 Arts and Businesses Award Gold Award & Jury Special Award</p>	 <p>2019 International Innovation Awards (Robotic Gait Training System)</p>	 <p>2018 International Innovation Awards (i4.0 Intelligent Ballscrew)</p>
 <p>2018 International Trade Awards The Best Trade Contribution Award</p>	 <p>2017 Good Design Award in Japan (Electric Gripper XEG Series)</p>	 <p>2016 iF and Red Dot Awards - International Design Award (Single Axis Robot - HM Series)</p>	 <p>2016 Bronze Award of National Biotechnology & Medical Care Quality Award of SNQ (Robotic Gait Recovery Robot)</p>	 <p>2016 National Standardization Award</p>	 <p>2014-2015 Forbes The World's Most Innovative Growth Companies</p>	 <p>2011-2015 TOP 20 Taiwan Innovative Enterprises</p>
 <p>2013 SGS "18 Years Merit Award"</p>	 <p>2013 1st Taiwan Mittelstand Award</p>	 <p>2012 TTQS Certificate of TaiwanTrainQuali System Enterprise Version Gold</p>	 <p>2011 National Enterprises Innovation Award</p>	 <p>2011 Taiwan Green Classic Award</p>	 <p>2011 The 1st Monte Jade Innovation Award</p>	 <p>2011 Taiwan Top 100 Brands</p>
 <p>2005, 2006, 2009 Taiwan Superior Brands</p>	 <p>2008 National Invention Award Contribution Award</p>	 <p>2004 Awarded with Most Outstanding of "the 12th Industrial Technology Advancement Award"</p>	 <p>2002 The 11th National Invention Award Gold Medal</p>	 <p>2002 Outstanding Promoter of the National Award of Excellence-Taiwan</p>	 <p>2000 The 8th Industrial Technology Advancement Award</p>	 <p>2000 The 1st "Industrial Excellence Award"</p>



Through professional excellence, working enthusiasm and enterprise responsibility, the Company is striving to reach the goal of sustainable development and expand its business world-wide.

1989 ♦ HIWIN is founded.

1992 ♦ Sets up a subsidiary in the USA.
♦ Attains ISO 9001 certification through SGS, UK.

1993 ♦ Acquires "Important Technology Business" Approval by Ministry of Economic Affairs.
♦ Acquires HOLZER and sets up a subsidiary in Germany.

1996 ♦ Merges with Finest Ballscrew Company, Taiwan.

1997 ♦ Acquires ISO 14001 certification from TÜV Germany.
♦ Affiliate HIWIN MIKROSYSTEM is established.

1999 ♦ Sets up a subsidiary in Japan.
♦ Forms a strategic alliance with Parker Hannifin, USA.

2000 ♦ Sets up a sub-subsidiary in Switzerland.

2001 ♦ Sets up a sub-subsidiary in the Czech Republic.

2002 ♦ Receives OHSAS 18001 certification.

2003 ♦ Sets up a plant in Yunlin Science Industrial Park.

2004 ♦ Hosts the first "HIWIN Thesis Award" (held each year).
♦ Completes B2B, (upstream and downstream), e-mechanism.

2005 ♦ Selected as an "Enterprise Citizen" by CommonWealth Magazine.

2006 ♦ New plant constructed by Chicago subsidiary starts operations.

2007 ♦ Groundbreaking for the new headquarters in Taichung Precision Machinery & Innovation Park.
♦ Acquires ISAT certification from Applied Material (USA) and becomes a qualified supplier.

- 2008**
- ◆ Hosts the first "HIWIN Intelligence Robotic Competition" (continues each year).
 - ◆ Obtains certification of Taiwan Occupational Safety & Health Management System (TOSHMS).
 - ◆ Hui-Ching Tsai takes over as General Manager.
- 2009**
- ◆ Invested in Mega-Fabs Motion Systems LTD in Israel.
 - ◆ Listed on the Taiwan Stock Exchange on June 26.
- 2010**
- ◆ Receives the "Contribution Award for Job Creation" from Executive Yuan, Ministry of Economic Affairs, and Taichung City Government.
 - ◆ Awarded the National Champion Award by MOEA for committing public facilities green landscaping, and employing specialists for long term maintenance.
 - ◆ Added an additional 97,567 m² of land in "Dapumei Intelligent Industrial Park" with a total land area of 149,706 m².
- 2011**
- ◆ Hosts the first "HIWIN Doctoral Dissertation Award" (held each year).
 - ◆ Receives the "Taiwan Talent Quality Management System (TTQS)" Silver Award.
 - ◆ Ranked No. 1 in Best Business Performance from 2009-2011 by Commonwealth Magazine.
- 2012**
- ◆ Establishes the "HIWIN Forum - Distinguished President Seminar".
 - ◆ Forbes 2012 Honor "200 Best Under A Billion".
 - ◆ The new HIWIN Global Headquarter and R&D Center starts operations.
- 2013**
- ◆ HIWIN releases first "Corporate Social Responsibility Report".
 - ◆ Sets up subsidiaries in Singapore, South Korea, and sub-subsidiary in Italy.
- 2014**
- ◆ Ranked No. 50 in "The World's Most Innovative Growth Companies 2014" by Forbes.
 - ◆ HIWIN selected as No. 1 weighted component in the investment benchmark Index "The ROBO-STOX Global Robotics & Automation Index".
 - ◆ Cornerstone laying ceremony held for the construction of HIWIN GmbH second plant.
 - ◆ Sets up a subsidiary in Suzhou, China.
 - ◆ HIWIN Robotic Gait Training System acquires the CE Medical Devices Certificate; HIWIN officially enters the medical industry.
 - ◆ Cornerstone laying ceremony held for Yung-Tong Chuo Memorial Library.
 - ◆ Establishes a R&D center with National Tsing Hua University.
 - ◆ Establishes the HIWIN-MPEI (Moscow Power Engineering Institute) Precision Electrical Engineering Research Center.
- 2015**
- ◆ Ranked No. 37 in "The World's Most Innovative Growth Companies 2015" by Forbes.
 - ◆ 2013-2014 Corporate Social Responsibility Report passes AA1000 certification.
 - ◆ Included as a of the TWSE RA Taiwan "Employment Creation 99 Index" (EMP 99) by the Taiwan Stock Exchange.
 - ◆ Establishes the China Medical University R&D Center.
- 2016**
- ◆ Rated No.5 in the "Top 100 Global Growth Enterprises by Nikkei Business Publications".
 - ◆ Cornerstone laying ceremony held for Suzhou plant.
 - ◆ Second plant of German subsidiary starts operations.
 - ◆ Cornerstone laying ceremony held for Chiayi Dapumei Precision Machinery Park.
 - ◆ Subsidiary in USA - Chicago plants starts operations.
 - ◆ Robotic Gait Recovery Trainer passes CFDA certification.
 - ◆ CNC rotary table passes EU CE certification.
 - ◆ Electric Gripper (XEG series) passes EU CE certification.
 - ◆ Obtains market license from TFDA for robotic endoscope holder.
- 2017**
- ◆ Signs contract for the Cultivation Mode of Lychee for Export from Taichung and the Key Technology of Value-added Freshness Preservation with NCHU and Taiping District Farmers' Association.
 - ◆ Obtains market license from TFDA for "Bath & Spa System".
 - ◆ Ranked No.1 in ASIA 300 Index for 179% market value increased rate in one year by Nikkei Business Publications.
 - ◆ New plant of China subsidiary starts operations.
 - ◆ Yung-Tong Chuo Memorial Library opens.
- 2018**
- ◆ Lychee introduction held in Tokyo, Japan.
 - ◆ HIWIN Germany awarded "Best Supplier Award" by HELLER.
 - ◆ HIWIN EFEM certified SEMI S2 International Safety Standards.
 - ◆ Receives perfect score in Sumitomo Heavy Industries Quality Evaluation.
- 2019**
- ◆ Places 9th in the 2019 "CommonWealth Magazine's" 2000 Biggest Enterprises - "Top 50 Best Operation Performances in Manufacturing".
 - ◆ Ranked 869th in the "Top 1,000 market value in Cross-Strait" 2019 from Business Today.
 - ◆ Placed 16th in NIKKEI Asian Review's "The Asia 300 Power Performers".
 - ◆ Ranked in Forbes Magazine's Best 200 Enterprises in Asia 2019.
 - ◆ Eddie Chuo takes over as chairman; Eddie Chuo and general manager Enid Tsai serve as CEO.
 - ◆ Founder Eric Y. T. Chuo serves as the Group's Global Chairman.
- 2020**
- ◆ At the time of establishing the National Special mask manufacturing equipment team during the Pandemic, HIWIN sent personnel and is a pioneer in the team.
 - ◆ Collaborate with China Medical University to setup Joint R&D Center and signed the second five year plan to cultivate more talents in the medical field.
 - ◆ Establish the first "Observation and Training Site of MIT Robotic Surgical Holder" at Chung Shan Medical University Hospital. Hiwin wishes to benefit more people, both rich and poor, by offering affordable precision medical device.
- 2021**
- ◆ Places 15th in the "CommonWealth Magazine's" Top 200 Resilient Companies - "Top 100 V-shaped comebacks".
 - ◆ Selected as a constituent stock of "TWSE Corporate Governance 100 Index".
 - ◆ Ranked in "Business Weekly - Taiwan's top 100 carbon reduction companies".
 - ◆ Global Chairman Eric Y.T. Chuo personally hosted the ESG initiation meeting, officially establishing the HIWIN ESG team.
- 2022**
- ◆ HIWIN was awarded the World's first ISO 46001 Water Efficiency Management System Certificate from TÜV Rheinland, Germany.
 - ◆ HIWIN Singapore partnered with the Thai-German Institute (TGI) to cultivate smart automation talent.
 - ◆ The new HIWIN factory in Kobe, Japan, was officially inaugurated, to provide Total Solution and services for the local market.
- 2023**
- ◆ HIWIN signed up for the Science Based Targets initiative (SBTi), committing to becoming a Net Zero company by 2050.
 - ◆ HIWIN was awarded the 2023 "Taiwan Best-in-Class 100 Companies".
 - ◆ HIWIN Group signed an agreement with the Industry- Academia Innovation College in Taiwan Tech, annually for industry-academia cooperation and cultivating future industry talents.
 - ◆ HIWIN donated a teaching robot to I-Shou University, collaborating to nurture smart automation talent.
 - ◆ HIWIN Italy was selected as the Top 4 component supplier in Italy by Tecnologie Meccaniche magazine.
 - ◆ HIWIN Korea relocated to the new Suwon factory to increase capacity and expand services to the local market.



Affiliated Companies

Stock code: 4576

HIWIN MIKROSYSTEM CORP.

Founded in 1997, HIWIN MIKROSYSTEM CORP. is the only company in Taiwan with the capability to develop and manufacture electromechanical drive control products. The company is fully equipped with vertical integration capabilities and has attained ISO 9001, 14001, 45001, and ISO50001 from BSI. Its products are widely applied in optoelectronics, FPD, semiconductor, PCB, machine tools, and automation industries. Not only has the company received many national awards and also a part of Taiwan mittelstand counselling reference. By upholding its innovative service concept, the company creates added value for customers.

www.hiwinmikro.tw



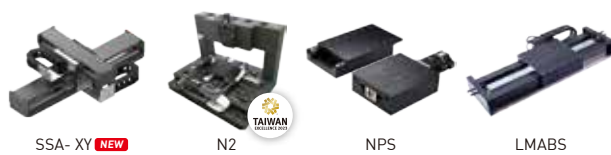
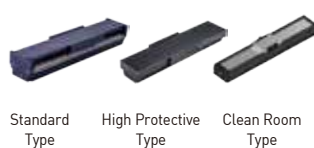
Controller and Drive



AC Servo Motor



Direct Drive Motor



Linear Motor Positioning Platform



Spindle Motor



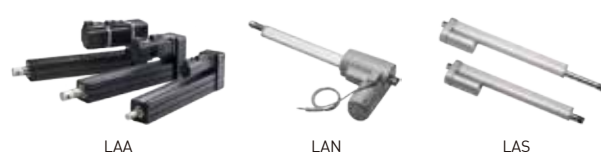
Linear Motor



Torque Motor



Position Measurement System



Linear Actuator



Headquarters / Hsin-Chu



Fengshan New Factory/ Hsin-Chu

Affiliated Companies

Matrix Precision Co., Ltd.

Matrix Precision is a gear machine tool company reorganized by HIWIN after the acquisition of Luren Precision (founded in 1994). It is hoped that by integrating the extensive production and R&D experience of the UK's major thread grinding machine company and its precision process and innovation capabilities, quality and professional services can be provided to the customer. The company also hopes to become a global leader in high value-added machine tools.

www.matrix-machine.tw
www.matrix-machine.com



Products

- ◆ Gear cutting tools: Hobs, shaving cutters, carbide hobs, shaper cutters and master gears.
- ◆ CNC gear machines: Gear grinding machines, worm and thread grinding machines, and hob sharpening machines.



Global Headquarters

HIWIN TECHNOLOGIES CORP.

Jingke 7th Rd., Intelligent Industrial Park, Taichung City

www.hiwin.tw

business@hiwin.tw

©2024 FORM R99LE15-2404
[PRINTED IN TAIWAN]